

GIL/GILS GAS POWERED ACTUATORS

Double acting and single acting gas powered linear actuators for on-off service



FEATURES

- Electroless nickel plated and polished cylinder for corrosion resistance and minimal friction.
- Hard chromium plated and polished piston rod in stainless steel for corrosion resistance and minimum friction.
- Piston rod support bushing in bronze with sintered PTFE provides minimal friction and extended service life.
- GILS totally enclosed spring cartridge ensures personnel safety during assembly or disassembly.
- Fabricated carbon steel adapter spool with accessories provision designed specifically for adaptation to any type of valve.
- Accept an extensive range of accessories:
 - Complete control panel
 - Emergency tank
 - Manual hand pump
 - PST device
 - Regulating device (ECU1000)
- Special coatings for offshore or corrosive environments.

GENERAL APPLICATION

GIL and GILS direct gas actuators are designed for the control of gate, globe and all other linear valves and use the gas flowing in the pipeline for their operation.

TECHNICAL DATA

Design pressure: 100 barg
 Supply medium: Sweet or sour high pressure gas, nitrogen or instrument air
 Ambient temperature: From -60°C to 100°C

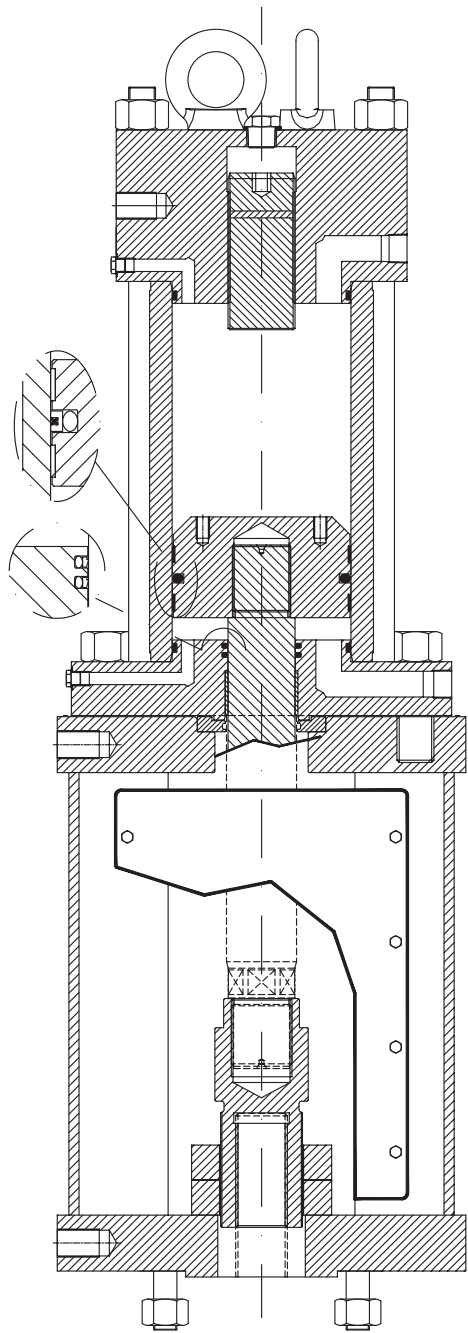
APPROVALS

Safety integrity level: IEC61508 -1÷7 2010
 Suitable for use in SIL 3 applications
 Area classifications: [ATEX] II2GD 135 (T4)
 Enclosure standard: (IEC60529)-IP67M ANSI/NEMA250 NEMA 4-4X-6
 Pressure equipment directive: PED 97/23/EC
 Machinery directive: 2006/42/EC

GIL/GILS GAS POWERED ACTUATORS

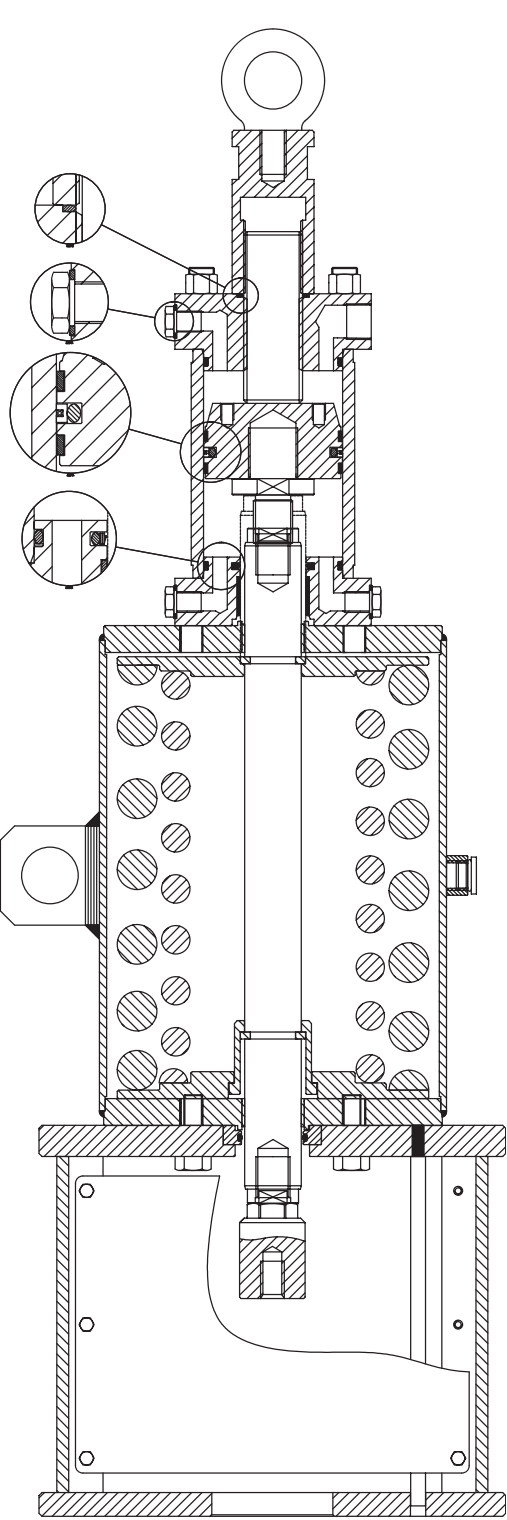
SECTIONAL DRAWINGS

GIL DOUBLE ACTING



NOTE
Dimensions are dependant on the valve stroke and thrust
for each actuator.

GILS SPRING RETURN



GIL/GILS GAS POWERED ACTUATORS

SELECTION GUIDE

DIRECT GAS DOUBLE ACTING ACTUATOR

Example:	GIL	250K	135	300	MHP
GIL	Actuator series				
250K	Max. allowable thrust (N)				
135	Cylinder diameter (mm)				
300	Stroke (mm)				
MHP	Manual override				

DIRECT GAS SPRING RETURN ACTUATOR

Example:	GILS	250K	135	100K	CL	300	MHP
GILS	Actuator series						
250K	Max. allowable thrust (N)						
135	Cylinder diameter (mm)						
100K	Spring ending thrust (N)						
CL	Spring action						
300	Stroke (mm)						
MHP	Manual override						